



CAUTION: Load hopper with product only after the spreader has been properly attached to the tractor.



WARNING: Chemicals may cause eye, skin or breathing problems. Always wear a face mask, gloves and goggles when filling hopper. Refer to chemical manufacturer's label for specific safety information.



WARNING: Use a tractor with a cab and appropriate filters on the ventilation system or wear a breathing mask capable of filtering toxic powders to prevent inhalation of product.



DANGER: Never allow anyone within 50 yards of the spreader while the PTO is engaged. Product thrown from the spreader can cause serious injury or death.



DANGER: Never allow any person inside the hopper for any reason. Serious injury or death can result from someone becoming entangled in the agitator.

1.02 - Side Row Discharge Assembly

To assemble the side-row discharge proceed as follows (see diagram in parts manual):

1. If the spreader is already assembled remove the two protections ("U" protection #001-4337 and "L" protection #502-013B) and the attachment plate (#001-4338 or #001-4339 depending on your spreader model).
2. Place the spreader upside-down.
3. Unpack the side-row discharge and remove the conveyor attachment (#503-704B) from the side-row discharge and mount to spreader frame in the same place where the "L" protection (#502-704B) was attached using two M8x25 bolts, four Ø8 flat washers and two M8 nuts.
4. Separate the two halves of the conveyor unit by unlatching the two side latches.
5. Place the two conveyor halves (#503-701B and #503-702B) around spreader disc ensuring that the smaller hole side is facing the hopper. Close the two side latches.
6. Mount the conveyor brackets (#503-705B) to the conveyor using two M8x25 bolts four Ø8 flat washers and two M8 nuts, loosely tighten.
7. Remove the two M10x110 bolts closest to spreader disc from gearbox mounting plate.

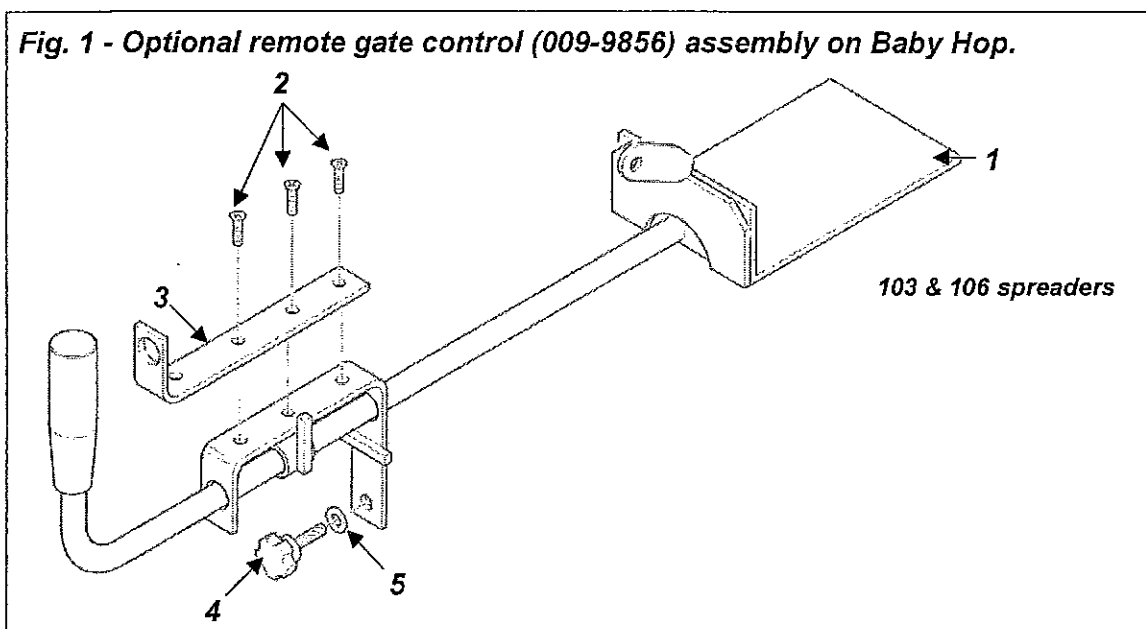
8. Raise left and right bracket attachment plates (#503-706B and 503-707B) in position so that the longer M10x120 bolts can be inserted through the left bracket, the gearbox and the right bracket. Install washers and nuts and tighten down securely.
9. Secure the conveyor unit to the conveyor attachment plate (#503-704B) using two M8x25 bolts, four Ø8 flat washers and two M8 nuts.
10. **IMPORTANT: All conveyor brackets have slotted holes to allow for the correct positioning of the conveyor so that it does not touch the spreader disc.**
11. Before tightening hardware ensure that the spreader disc does not touch the conveyor by manually spinning the disc.
12. Attach baffle plate with two M8 hand wheels (one on each side), two Ø8 lock washers and two Ø8 flat washers.
13. Tighten all hardware.

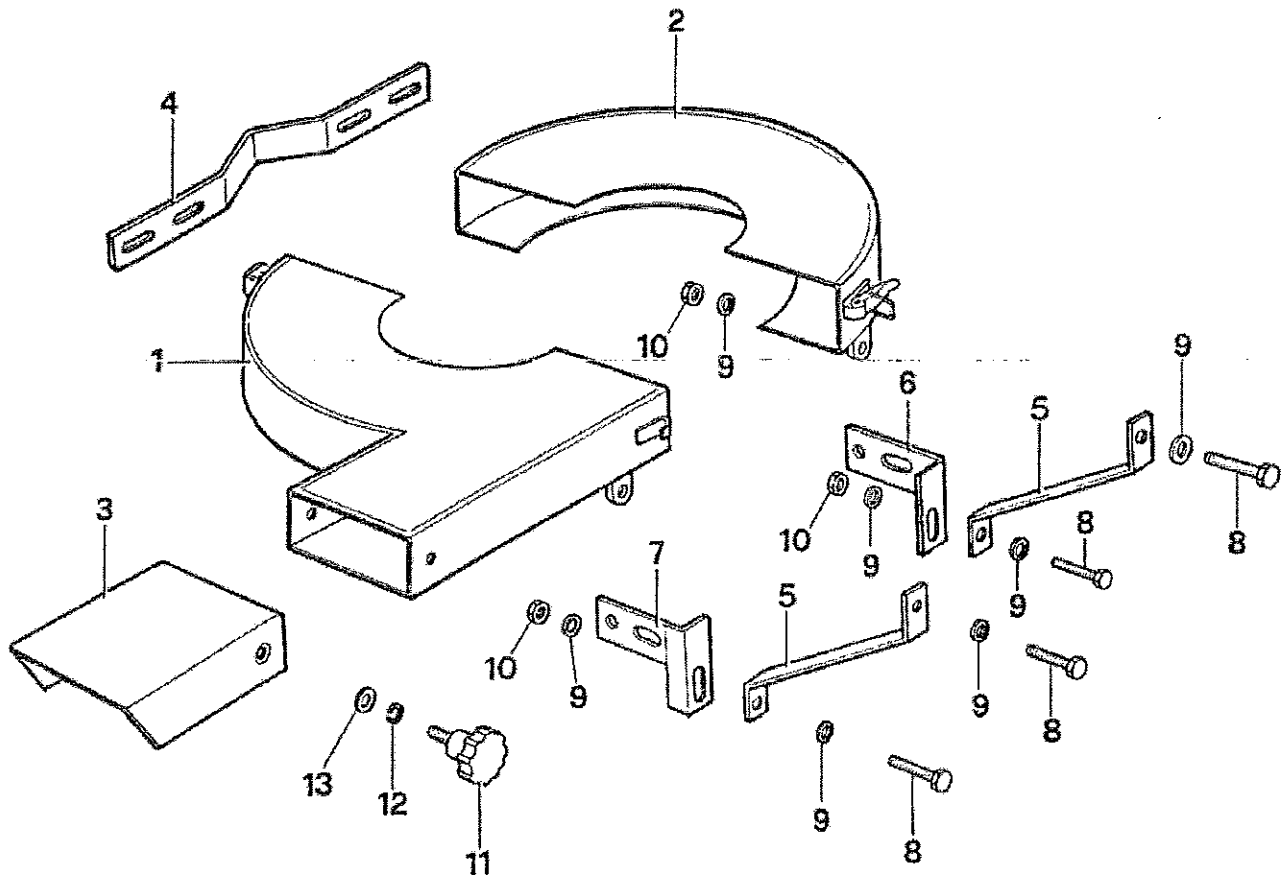
1.03 - Deflector

The optional rear deflector, available for all models, bolts on to the spreader frame and is used to regulate the **spreading width**. Move the deflector up and down to change the spreading distance. The higher the deflector is up the further the spread width, the lower the less distance the material travels.

On models 206, 209 and 212 the "U" protection needs to be removed before assembling the deflector.

1.04 - Remote Gate Control Assembly Baby Hop 103 and 106





Ref.	Part #	Description	Qty.
1	503-701B	Half conveyor, left	1
2	503-702B	Half conveyor, right	1
3	503-703B	Baffle plate	1
4	503-704B	Conveyor attachment	1
5	503-705B	Conveyor bracket	2
6	503-706B	Bracket attachment plate, right	1
7	503-707B	Bracket attachment plate, left	1
8	009-1446	Bolt HH M08-1.25x25 C8.8 Z F	8
9	001-5230	Washer flat Ø8 W	16
10	009-1384	Nut ES M08-1.25 Z TK	8
11	501-589B	Adjustment knob M8x15	2
12	000-3144	Washer lock Ø8 Z	2
13	000-2034	Washer flat Ø10 W	2
	AA4-120	Side row discharge, complete; 209, 212	-